



MINERVA

U4205A USB 3.1/10Gbps to mSATA SSD & M.2 SSD

10Gbps Performance & Burn In Test Rev. 1.0

Table of Contents

1. Overview

2. Performance Measurement Tools and Results
 - 2.1 Test Platform
 - 2.2 Test target and Used SATA III / mSATA SSD & M.2 NGFF SSD
 - 2.3 Install Hardware
 - 2.4 BIOS & Windows 8.1 x64 OS environment setup
 - 2.5 CrystalDiskMark 3.0.3 x64 performance test
 - 2.6 AS SSD Benchmark 1.7 performance test
 - 2.7 ATTO Disk Benchamrk 2.47 performance test
 - 2.8 AnvilBenchmark_V110_B337 Benchmark performance test

3. Burn In Tests and Results
 - 3.1 BurnInTestv8.0 Pro burn in test

4. Summary

U4205A USB3.1/10Gbps Micro B receptacle for mSATA SSD & M.2 SSD

1. Overview

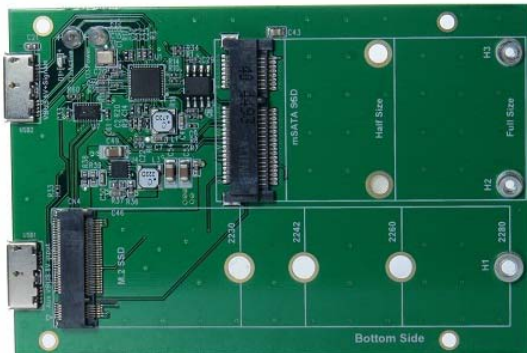
U4205A is mSATA & M.2 for USB3.1 Micro B adapter offers USB 3.1 to SATA interface, built-in Mini PCI-e & M.2 67-pin B-key connector, able to convert mSATA or M.2 SSD to USB 3.1 use.

2. Tools and Results of Performance Measurement

2.1 Test Platform

M/B : ASRock **Z97 Extreme 6**
CPU : Intel **i5-4426**, 3.2GHz/ 6M Cache/ LGA1150
Memory : Kingston **KVR16N11S8/4**, DDR3-1600MHz, 8G(4GB DIMM*2)
ATX Power : FSP RAIDER 550, **550W ATX**, 12V V2.2 Power Supply
Graphic : Z97 Chipsets built-in **HD Graphics 4600**
OS : Microsoft **Windows 8.1 64bit OS**

2.2 Test target: U4205A adapter and mSATA SSD(Crucial [CT-128M550SSD3/128GB](#))



U4205A Adapter



CT128M550SSD3/128GB

2.3 Install Hardware

2.3.1 Insert mSATA into U4205A adapter's mini PCI-e connector, and then with coppers, and screws to fix SSDs. Connect U4205A adapter to **USB 3.0 of ASRock Z97 Extreme6**.

2.4 BIOS & Windows 8 OS environment setup

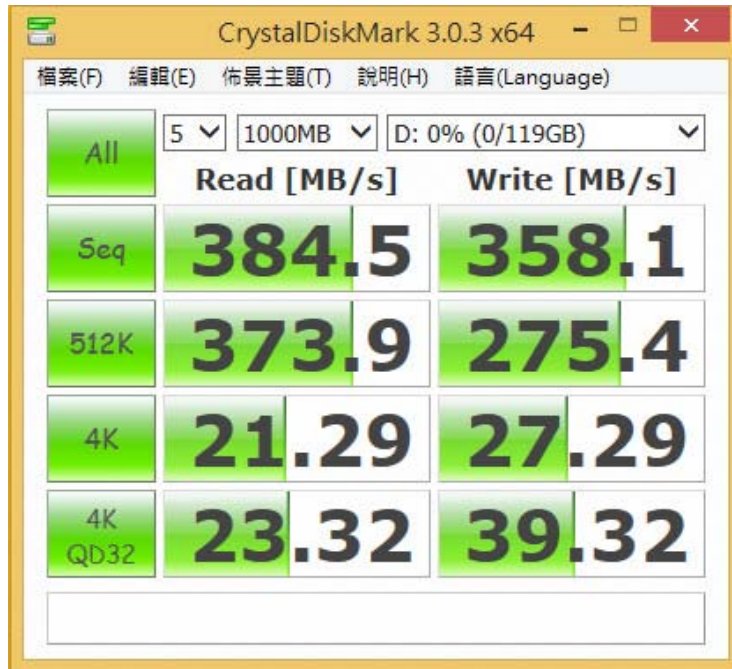
2.4.1 Install Windows 8.1 x64 OS.

U4205A USB3.1/10Gbps Micro B receptacle for mSATA SSD & M.2 SSD

2.5 CrystalDiskMark 3.0.1 x64 performance test

※Benchmark (Sequential **Read & Write** / default = **1MB**)

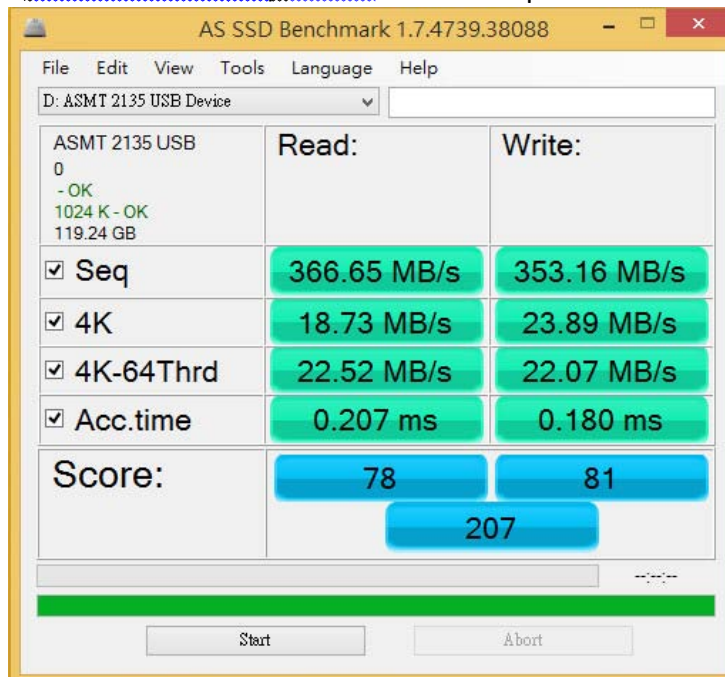
2.5.1 Used [CT-128M550SSD3 / 128GB](#) in **U4205A** performance as below:



2.6 AS SSD Benchmark 1.7 performance test

※Benchmark (**Read & Write** by MB/s, default block size = **16MB**)

2.6.1 Used [CT-128M550SSD3 / 128GB](#) in **U4205A** performance as below:

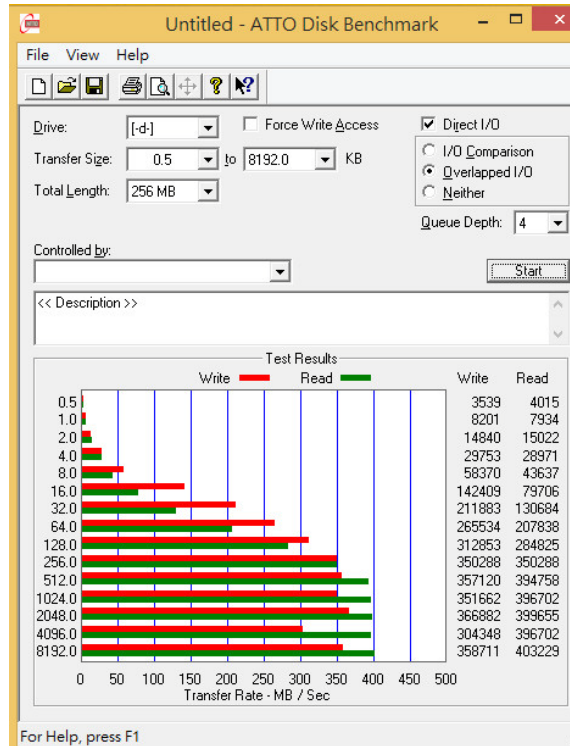


U4205A USB3.1/10Gbps Micro B receptacle for mSATA SSD & M.2 SSD

2.7 ATTO Disk Benchmark performance test

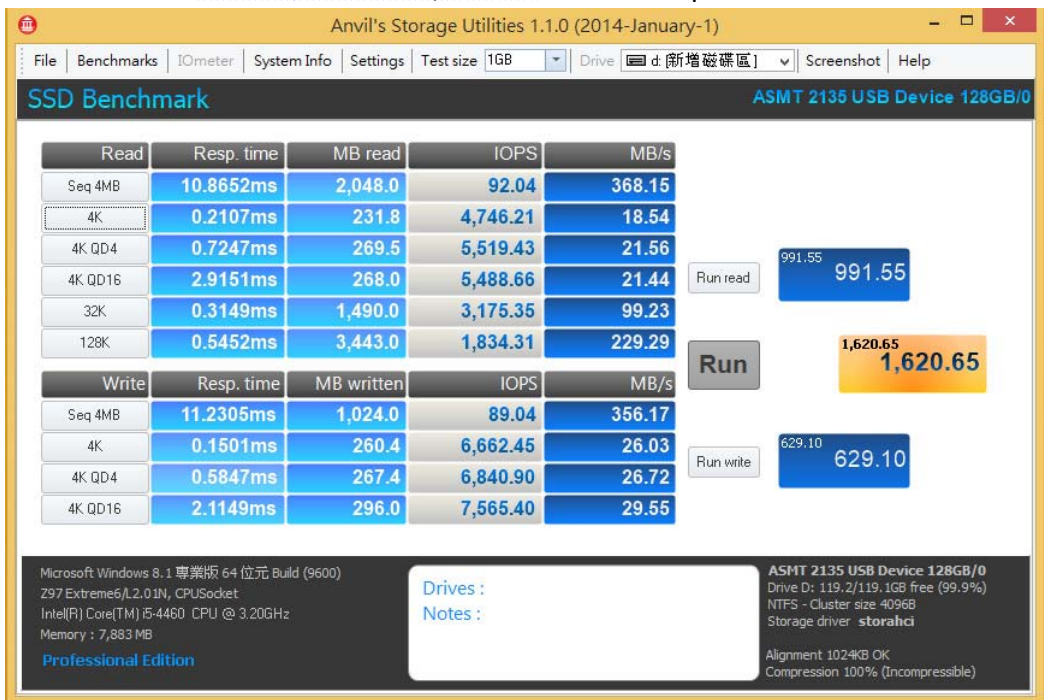
※Benchmark (Sequential **Read** / default block size = **8MB**)

2.7.1 Used [CT-128M550SSD3 / 128GB](#) in **U4205A** performance as below:



2.8 AnvilBenchmark_V110_B337

2.8.1 Used [CT-128M550SSD3 / 128GB](#) in **U4205A** performance as below:

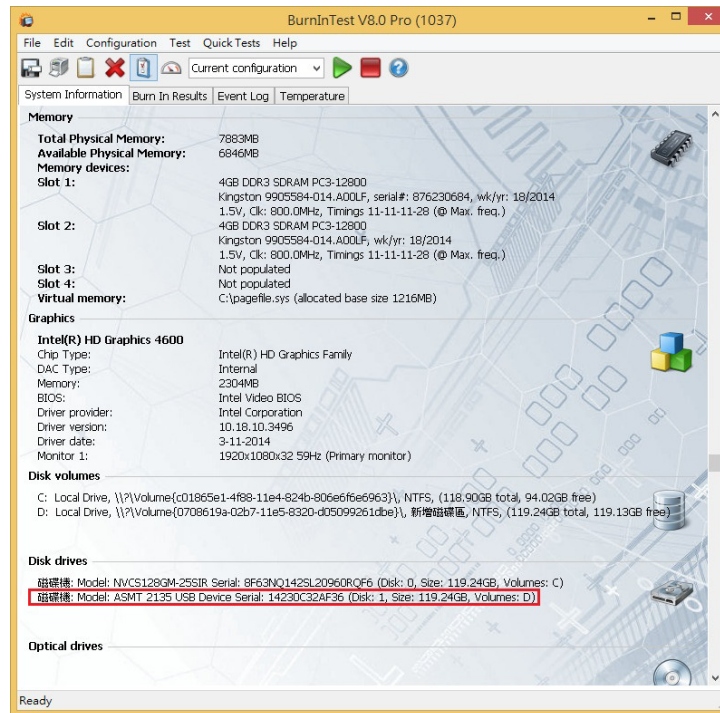


U4205A USB3.1/10Gbps Micro B receptacle for mSATA SSD & M.2 SSD

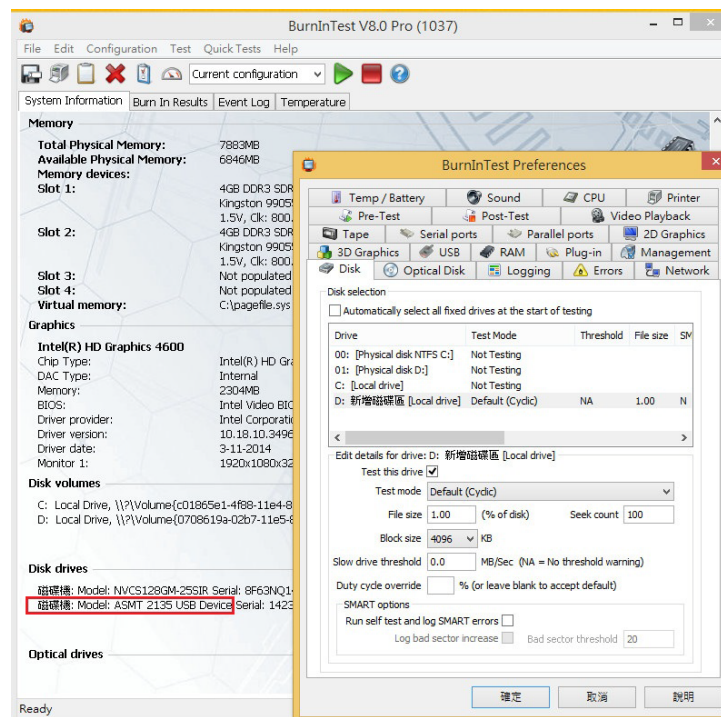
3. Burn In Tests and Results

3.1 BurnInTest v8.0 Pro

3.1.1 system information for [CT-128M550SSD3 / 128GB](#) in U4205A as below:

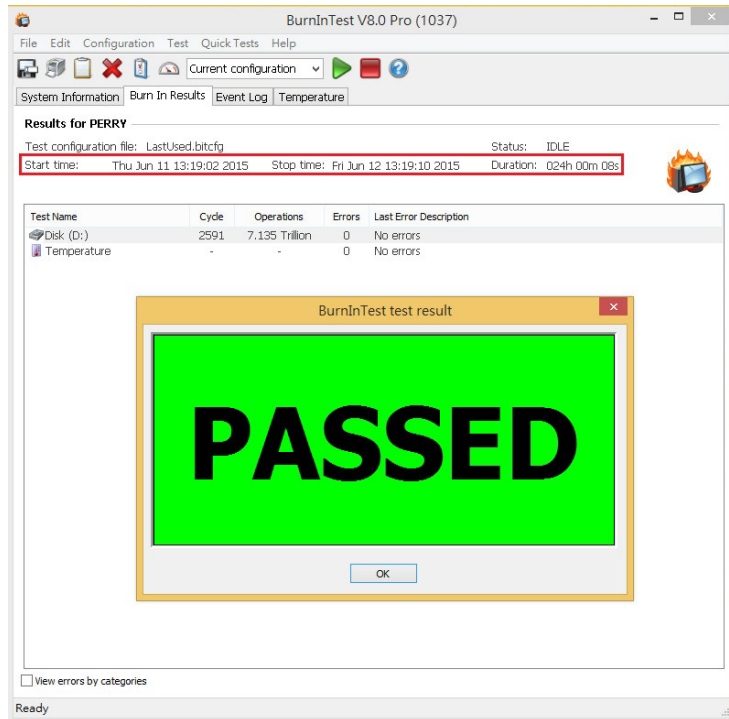


3.1.2 show [CT-128M550SSD3 / 128GB](#) in U4205A test mode(10 ways cycle)



U4205A USB3.1/10Gbps Micro B receptacle for mSATA SSD & M.2 SSD

3.1.3 show [CT-128M550SSD3 / 128GB](#) in **U4205A** 24-hour Burn-in test **PASSED**



4. Summary

- 4.1 U4205A is USB 3.1 10Gbps Interface, I/O speed, max. to 800MB/s.
- 4.2 U4205A adapter I/O performance is based on mSATA SSD.